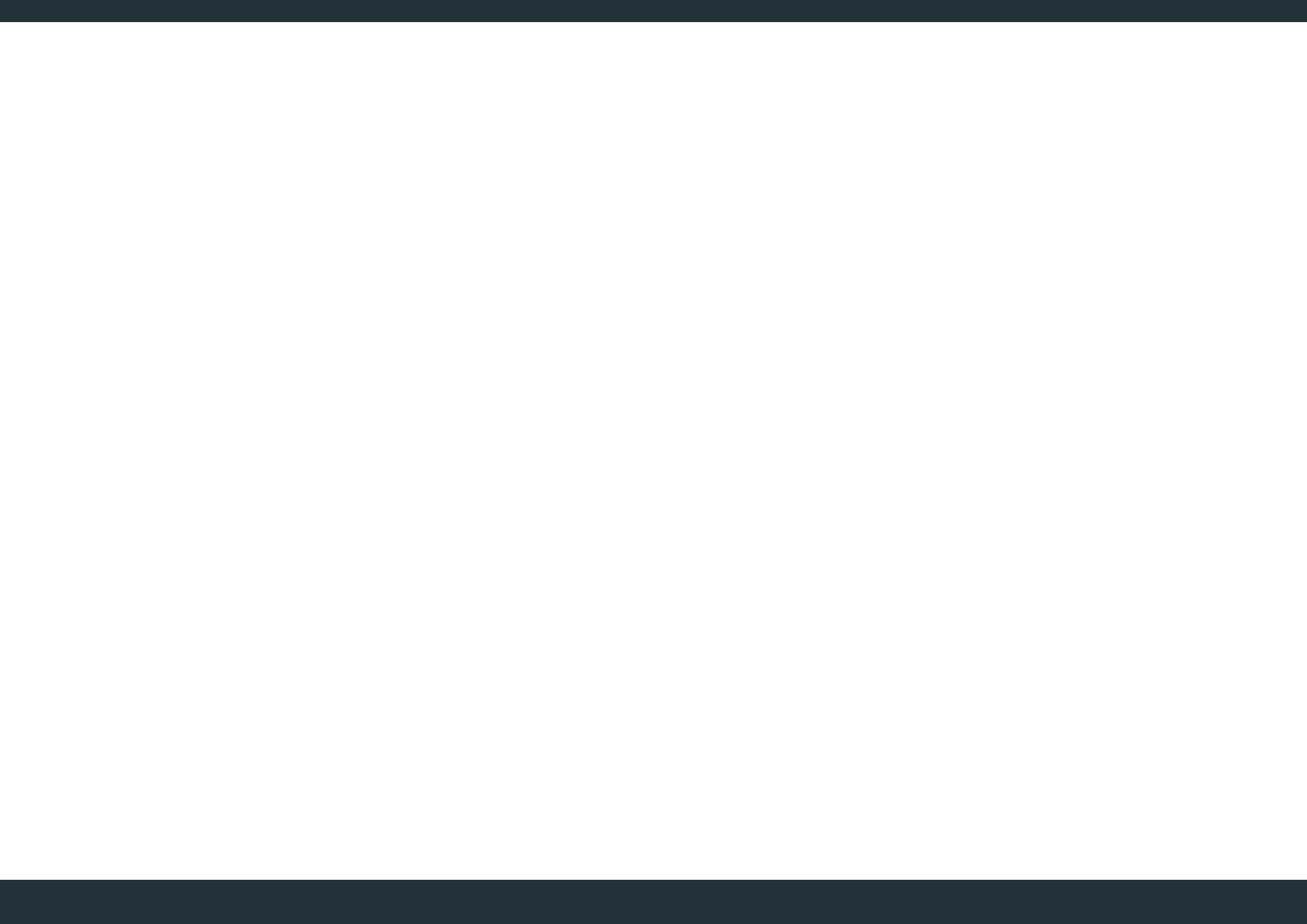




Reliable components – intelligent system solutions

Product pallet



Motec

Systematic safety

Whether freight, rail traffic, industry, municipalities, logistics or agriculture – Motec has been one of the leading manufacturers of high-quality and intelligent camera monitoring systems for mobile applications for over 20 years. Our strength: Systems which we customise perfectly to your needs. High-grade components designed for continuous operation under the toughest conditions which function reliably in wind and rain.

Motec is a flexible and reliable partner for initial equipping. Our processes in the development, production and service are at OEM level and meet the industrial standards. Renowned international vehicle, machine and system manufacturers are relying on our systems and components since years and trust in our solution expertise.

Monitors

- Top processing
- Easy installation
- High functionality
- Digital technology for the highest image quality
- Can be installed as modules

Cables and plugs

- More than 600 cables and connectors - robust, waterproof,
- reinforced
- Customised assembly
- Individual tailoring
- Every connection possible
- High quality material mix

Cameras

- Top processing
- Robust and resistant
- Suitable for high pressure cleaners (IP69K)
- Modern camera technology
- Can be installed as modules
- Automatically controlled camera heating

Certified quality

Top quality at all levels Motec is certified in accordance with ISO 9001 and ISO14001 and holds the AEO certificate as an “Authorised Economic Operator”.



Technical service

Fast help guaranteed

Top quality also includes top service. We are also available to assist you with technical questions or problems. Our sales and technology divisions work closely together. You will benefit from short distances and efficient communication. Our service employees know your needs, can understand your processes and quickly find a solution.

Associations





From the camera manufacturer to the system supplier

Motec GmbH was founded in 1992 by Ferdinand Gräf and Michael Weber. Since that time the company has expanded from a camera manufacturer to an internationally oriented system supplier. Over 100 skilled employees currently implement the diverse customer requirements at locations in Germany, France and Scandinavia. Motec uses a closely linked network of regional collaboration and retail partners as well as its own sales branches to support its customers worldwide – quickly, reliably and on time.



Preferred OEM partner

Motec is a flexible and reliable partner for the initial equipping. Our processes in the development, production and service are at OEM level and meet the industrial standards. Renowned international vehicle, machine and system manufacturers have relied on our systems and components ex works and trust in our problem-solving competence over 20 years of experience.



Cameras

Robust, reliable and multi-faceted

MC3000A

Heavy duty camera



The MC3000 series cameras are particularly tough. Impacts, vibrations, dust, rain or rock fall cannot harm them. Numerous equipment variations form the basis; we produce models customised for each application as required.

- Machined aluminium housing
- Automatically controlled defogger
- High shock and vibration resistance
- Automatic brightness compensation
- Sharp and high-contrast images
- High-pressure cleaner resistance IP69K

■ Technical data

Housing protection class	IP69K
Shock resistance	50 g
Vibration resistance	10 g
Housing	Aluminium; anodised
Lighting strength	< 0.3 lx
Resolution	320,000 Pixels
Image sensor	1/3" CCD sensor
Video signal	FBAS, 1 Vss / 75 Ohm
Power supply	12 V DC \pm 1 V
Current consumption	0,25 A
Operating temperature	-35 °C ... +75 °C
Storage temperature	-40 °C ... +80 °C
Defogger	automatic
Brightness adjustment	automatic

■ Accessories



Light protection hood



Quick release bracket



High-pressure cleaning system

MC6000C

Robust universal camera



Whether as a rear-view camera or for monitoring of work area – the MC6000 series cameras are universal and reliable all-rounders for every application. The stable and weatherproof aluminium diecast housing enables usage under the most difficult conditions.

- Stable and weatherproof housing
- High shock and vibration resistance
- Automatically controlled defogger
- Automatic brightness compensation
- High-pressure cleaner resistance IP69K

■ Technical data

Housing protection class	IP69K
Shock resistance	50 g
Vibration resistance	10 g
Housing	Aluminium; anodised
Lighting strength	< 0.3 lx
Resolution	320,000 Pixels
Image sensor	1/3" CCD sensor
Video signal	FBAS, 1 Vss / 75 Ohm
Power supply	12 V DC ± 1 V
Current consumption	0.25 A
Operating temperature	-35 °C ... +75 °C
Storage temperature	-40 °C ... +80 °C
Defogger	automatic
Brightness adjustment	automatic

■ Accessories



Light protection hood



Quick release bracket



High-pressure cleaning system

MC7000P

Compact CMOS camera



Whether as a side-view or mirror substitute camera or for the monitoring of work areas – the compact design of the MC7000 series cameras makes them suitable for diverse applications. The stable and weatherproof aluminium housing enables usage under the most difficult conditions.

- Universal camera with robust aluminium housing
- Modern image electronics (CMOS-Chip)
- Adapts easily to changing lighting conditions
- High-pressure cleaner resistance IP69K

■ Technical data

Housing protection class	IP69K
Shock resistance	50 g
Vibration resistance	5 g
Housing	Aluminium
Lighting strength	< 1 lx
Resolution	640 (h) x 480 (v)
Image sensor	CMOS 1/4"
Video signal	FBAS, 1 Vss / 75 Ohm
Power supply	12 V DC
Current consumption	60 mA
Operating temperature	-35 °C ... +65 °C
Storage temperature	-40 °C ... +85 °C
Video system	PAL
Brightness adjustment	automatic

■ Accessories



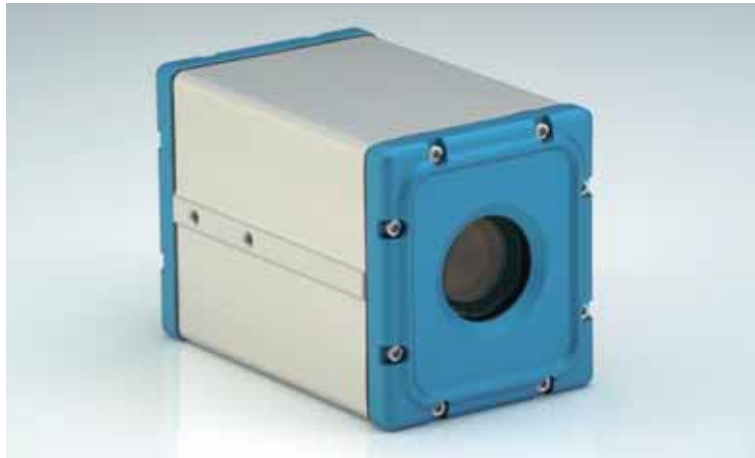
Stainless steel mount



Rubber support

MC5200

Motor zoom camera



The MC5200 was especially developed for load monitoring on cranes. Modern video module technology provides sharp and high-contrast images and enables a zoom of up to 216 times the actual size. The crane driver can easily operate the camera using the Motec System Bus (MSB).

- Robust aluminium housing
- Sharp and high-contrast images
- 26-fold optical zoom
- Horizontal angle of view of 1.6° to 47.5°
- Integrated defogger

■ Technical data

Housing protection class	IP X5, IP 68
Shock resistance	50 g
Vibration resistance	10 g
Housing	Aluminium; anodised
Lighting strength	< 0.7 lx
Resolution	440,000 Pixels
Image sensor	CCD, 1/4" EX View HAD
Video signal	Motec System Bus MSB
Power supply	24 V DC
Current consumption	0,45 A
Operating temperature	-35 °C ... +60 °C
Storage temperature	-40 °C ... +85 °C
Zoom factors	18 x optical, 12 x digital F = 1.4 ... 3.0 Horizontal: 48° ... 2.8° Vertical: 36° ... 2.1°
Corrosion resistance	IEC 60068 Ka test

■ Accessories



Suspended bracket

MC9150

Forklift camera with pin-hole lens



The MC9150 is mounted on the fork shank and thus protected from impacts. The pin-hole lens offers additional protection. The small housing opening reduces the risk of mesh boxes or pallets damaging the lens. The 50 degree angle view enables a view of both forks.

- Robust stainless steel housing
- Suitable for high pressure cleaners (IP69K)
- Pin-hole lens (3mm)
- CMOS sensor
- Optimal images even in poor lighting

■ Technical data

Housing protection class	IP69K
Shock resistance	100g / 11ms / 3 axes à 6x / sinusoidal half-wave 40g / 6ms / 3 axes à 100x / sinusoidal half-wave
Vibration resistance	10g / 3 axes à 2h / sinusoidal wave 1g / 3 axes à 30 min / noise
Housing	Stainless steel
Lighting strength	0.2 lx
Resolution	640 (h) x 480 (v)
Image sensor	CMOS 1/4"
Video signal	FBAS, 1 Vpp / 75 Ohm
Power supply	12 V DC ± 10%
Current consumption	80mA
Operating temperature	-40 °C ... +80 °C
Storage temperature	-40 °C ... +85 °C

■ Accessories



Fork mounting bracket



Mounting bracket

MC9050

Robust fork camera



The MC9050 is mounted on the inside of the fork and is therefore always at eye-level with the pallet. The pin-hole lens and the associated pin-size opening of the housing housing opening reduces the risk of mesh boxes or pallets damaging the lens.

- Stainless steel housing
- Highest shock resistance
- Pin-hole lens (3 mm)
- Mounting on the inside of the fork
- High light sensitivity

■ Technical data

Housing protection class	IP69K
Shock resistance	100g / 11ms / 3 axes à 6x / sinusoidal half-wave 40g / 6ms / 3 axes à 100x / sinusoidal half-wave
Vibration resistance	10g / 3 axes à 2h / sinusoidal wave 1g / 3 axes à 30 min / noise
Housing	Stainless steel
Lighting strength	0.2 lx
Resolution	640 (h) x 480 (v)
Image sensor	CMOS 1/4"
Video signal	FBAS, 1 Vpp / 75 Ohm
Power supply	12 V DC ± 10%
Current consumption	80 mA
Operating temperature	-40 °C ... +80 °C
Storage temperature	-40 °C ... +85 °C

■ Accessories



Camera extension

PathFindIR

Thermal camera



The thermal camera delivers clear images even in absolute darkness or in thick smoke. The driver sees up to 5-times further than with conventional headlights and can recognise persons, animals or objects sooner. Motec distributes the Path-FindIR of the American manufacturer Flir exclusively in Germany.

- Robust and waterproof housing
- Requires no light sources
- Clear images in darkness, fog, rain or snow
- Wide angle lens 19 mm
- Integrated heating elements
- Compatible with nearly every display

■ Technical data

Housing protection class	Waterproof
Shock resistance	30g
Geometrical resolution	2 mRad
Detector type	Focal Plane Array (FPA), uncooled micro-bolometer 324 x 256 Pixel
Vibrations	IEC 60068-2-64
Resolution	324 x 256
Operating voltage	6 - 16 V DC
Field of vision	36° (H) x 27° (V) with 19-mm lens
Dimensions	57.4 mm x 56.1 mm x 71.4 mm
Weight	360g
Operating temperature	-40 °C ... +80 °C
Storage temperature	-57 °C ... +105 °C



Monitor

Monitors

Find a place in almost every driver cabin and provide the best images possible in any situation

MD3052A-L

5.6" monitor with integrated camera control



This compact 5.6" monitor was designed for small and restricted driver cabins. It can easily be installed in places which can not accommodate for larger monitors. It displays clear and distortion-free images in 4:3 format.

- Two switchable camera images
- Fits in every cabin
- With light protection hood
- Image mirroring

■ Technical data

Housing protection class	IP 30
Shock resistance	10 g
Vibration resistance	5 g
Background lighting	300 cd/m ²
Screen size	14.2 cm (5.6")
Resolution in pixels	640 x 480
Video inputs	2
Operating temperature	-20 °C...+60 °C
Storage temperature	-30 °C...+75 °C
Video signal	FBAS
Video system	PAL & NTSC
Signal input	1Vpp(30% Sync neg)/75 Ohm
Power supply	12 / 24 V DC
Current consumption	max. 700mA

■ Accessories



Light protection hood



Anti-vibration bracket



Swivel bracket

MD3070A

7" monitor



The compact and flat design of this compact 7" monitor makes it particularly suitable for usage in constricted driver cabins. With its digital panel it provides high-contrast and true colour images in 16:9 format.

- Flat and compact design – fits into almost every cabin
- High temperature resistance (-35° to +80°)
- Operation in connection with cable and terminal box

■ Technical data

Housing protection class	IP 30
Shock resistance	10 g
Vibration resistance	5 g
Background lighting	500 cd/m ²
Screen size	17.8 cm (7" / 16:9)
Resolution in pixels	800 x 480
Video inputs	1
Operating temperature	-25 °C...+80 °C
Storage temperature	-30 °C...+85 °C
Video signal	FBAS
Video system	PAL & NTSC
Signal input	1Vpp(30% Sync neg)/75 Ohm
Power supply	12 / 24 V DC
Current consumption	max. 700mA

■ Accessories



Light protection hood



Anti-vibration bracket



Swivel bracket

MD3072B

7" monitor with integrated camera control



Up to two cameras can be operated with the MD3072B. The images can be changed between each cameras either using the buttons on the monitor or automatically using control lines. The 7" digital monitor enables individual settings for each camera.

- Screen size 17.8 cm / 7"
- Built-in video control unit
- Connect up to two cameras
- Image mirroring

■ Technical data

Housing protection class	IP 30
Shock resistance	20 g
Vibration resistance	10 g
Background lighting	400 cd/m ²
Screen size	17.8 cm (7" / 16:9)
Resolution in pixels	800 x 480
Video inputs	2
Operating temperature	-30 °C...+80 °C
Storage temperature	-35 °C...+85 °C
Video signal	FBAS / CVBS
Video system	PAL & NTSC
Signal input	1Vpp(30% Sync neg)/75 Ohm
Power supply	12 / 24 V DC
Current consumption	max. 1200mA

■ Accessories



Light protection hood



Anti-vibration bracket



RAM-Mount

MD3072B-Quad

7" monitor with 4-way split screen



The MD3072B Quad split screen can be used to display up to four cameras at once. An integrated menu and control lines for automatic control of the connected cameras ensure quick image switching. This 7" monitor is equipped with a digital panel and thus provides high-contrast and true colour images.

- Split screen - up to four images at once
- Direct connection of up to four cameras
- Manual or automatic camera selection
- Screen size 17.8 cm / 7"

■ Technical data

Housing protection class	IP 30
Shock resistance	20 g
Vibration resistance	10 g
Background lighting	400 cd/m ²
Screen size	17.8 cm (7" / 16:9)
Resolution in pixels	800 x 480
Video inputs	4
Operating temperature	-30 °C...+80 °C
Storage temperature	-35 °C...+85 °C
Video signal	FBAS / CVBS
Video system	PAL & NTSC
Signal input	1Vpp(30% Sync neg)/75 Ohm
Power supply	12 / 24 V DC
Current consumption	max. 1600mA

■ Accessories



Light protection hood



Anti-vibration bracket



Swivel bracket

MD3074A-Quad

7" Monitor - Temperature and water resistant outdoor monitor



The MD3074A-Quad was especially developed for outdoor usage and refrigerated warehouse. Thanks to the usage of the latest membrane technology, rain, moisture and strong temperature fluctuations are not a problem for this outdoor monitor. The 7" digital monitor is equipped with strong background lighting and provides high-contrast images even in direct sunlight.

- Screen size 17.8 cm / 7"
- Robust outdoor monitor
- Waterproof and suitable for refrigerated warehouse
- Connect up to four cameras
- Split screen – for up to four simultaneous camera images
- Image mirroring

■ Technical data

Housing protection class	IP 65
Shock resistance	40 g
Vibration resistance	10 g
Background lighting	400 cd/m ²
Screen size	17.8 cm (7" / 16:9)
Resolution in pixels	1440 x 234
Video inputs	4
Operating temperature	-30 °C...+70 °C
Storage temperature	-40 °C...+85 °C
Video signal	FBAS / CVBS
Video system	PAL & NTSC
Signal input	1Vpp(30% Sync neg)/75 Ohm
Power supply	12 / 24 V DC
Current consumption	max. 2000mA

■ Accessories



Voltage transformer
MPM48



RAM-Mount

MD3071

7" monitor



The compact and flat design of the compact 7" monitor makes it particularly suitable for usage in confined cabins. It is prepared for installation in a double IDIN shaft and can therefore be easily installed in places too small for larger monitors. With its digital panel it provides high-contrast and true colour images in 16:9 format.

- Flat design
- Processed for installation in a doubled-in shaft
- Flexible usage with or without control unit
- Switchable control output
- Flexible configuration

■ Technical data

Housing protection class	IP 30
Shock resistance	10 g
Vibration resistance	5 g
Background lighting	320 cd/m ²
Screen size	17.8 cm (7" / 16:9)
Resolution in pixels	800 x 480
Video inputs	2
Operating temperature	-30 °C...+80 °C
Storage temperature	-30 °C...+80 °C
Video signal	FBAS
Video system	PAL & NTSC
Signal input	1Vpp(30% Sync neg)/75 Ohm
Power supply	12 / 24 V DC
Current consumption	max. 700 mA

■ Accessories



Light protection hood



Anti-vibration bracket

MD3100

10" monitor



The MD3100 monitor with its 10" screen enables the useful illustration functions such as of Picture in Picture or several simultaneous images. It is equipped with a powder-coated metal housing for industrial usage which meets Housing protection class IP54 on the front side.

- Screen size 25.9 cm (10.2")
- Stable metal housing
- Protection class IP54 (Front side)
- Power supply via MVCU

■ Technical data

Housing protection class	IP 54 on the front side
Shock resistance	25 g
Background lighting	300 cd/m ²
Screen size	25.9 cm (10" / 16:9)
Resolution in pixels	800 x 480
Video inputs	1
Operating temperature	-20 °C...+70 °C
Storage temperature	-30 °C...+85 °C
Video signal	Composite video
Video system	PAL & NTSC
Signal input	1Vpp(30% Sync neg)/75 Ohm
Power supply	12 / 24 V DC
Current consumption	max. 500mA

■ Accessories



Light protection hood



RAM monitor bracket

TFT17

17" monitor



The TFT17 monitor with its 17" screen also enables the display of complex image configurations like those typical in industrial and stationary applications. The high resolution of the 17" monitor, with class IP65 protection on the front side, supplies true-to-detail and sharp camera images.

- For industrial and stationary applications
- Robust and resistant housing
- Housing protection class IP65 (front side)

■ Technical data

Housing protection class	IP 65 on the front side
Shock resistance	5 g
Background lighting	350 cd/m ²
Screen size	43.1cm (17" / 4:3)
Resolution in pixels	1280 x 1024
Video inputs	BNC: F-BAS DVI: DVI digital 15 Pol. Sub-D: VGA
Operating temperature	0 °C...+50 °C
Storage temperature	-20 °C...+60 °C
Video signal	FBAS, DVI, VGA
Signal input	1Vpp(30% Sync neg)/75 Ohm
Power supply	230 V DC
Current consumption	max. 0.5 A



Control units

Motec video control allows the driver to maintain an overall view at all times

MB1205

for up to two cameras



The MB1205 control unit enables the connection of up to two cameras and spontaneously switches the various cameras on automatically to display the appropriate camera image to the driver or machine operator in each situation.

- Easy control of up to two cameras
- Power supply with 12 or 24V DC
- Mirror function for each camera
- Supports indicator-controlled side camera
- Automatic trailer detection for drawbar trailers

■ Technical data

Housing protection class	IP 30
Shock resistance	10 g
Vibration resistance	5 g
Camera inputs	2x Mini DIN
Storage temperature	-40 °C ... +95 °C
Operating temperature	-30 °C ... +75 °C
Power supply	12 / 24 V DC
Housing	Metal (galvanised)
Connections	Plug connectors
Image mirroring	12 V, on the monitor side (config. using DIL switches)
Trailer mode	On C2 input (config. using DIL switches)
Priority	C1 before C2

■ Functions

- Power supply of TFT monitor and compact camera
- Video signal switching of 2 video inputs
- Trailer function (automatic camera switching for drawbar trailers)
- Image mirroring separately adjustable for each camera
- Indicator function (camera switching can be activated by clock signals)

MB1405

for up to four cameras



The MB1405 control unit enables the connection of up to four cameras and switches them on automatically to display the appropriate camera image to the driver or machine operator in the current situation.

- Control of up to four cameras
- Image mirroring separately adjustable for every camera
- Automatic camera relaying
- Supports side camera controlled by turn signals

■ Technical data

Housing protection class	IP 30
Shock resistance	10 g
Vibration resistance	5 g
Camera inputs	2x Mini DIN
Storage temperature	-40 °C ... +80 °C
Operating temperature	-30 °C ... +75 °C
Power supply	24 V DC
Housing	Metal (galvanised)
Connections	Plug connectors
Image mirroring	Camera or monitor side
Trailer mode	On C2 input (config. using DIL switches)
Priority	C1 before C2; C2 before C3; C3 before C4

■ Functions

Power supply of TFT monitor and compact camera (C1-C4)

Video signal switching of 4 video inputs

Image mirroring separately adjustable for each camera (using DIP switch)

Indicator function (side-view camera can be activated by clock signals)

Automatic camera relaying selectable using DIP switches for 3 or 4 camera inputs; time interval can be set between 5 to 30 seconds

MB1405-Quad

with quad and split function



The MB1405-Quad control unit makes it possible to display up to four camera images at once in the “Quad-Split” mode. The remote control included can be used to manually switch the various camera images. This is supplemented by the possibility to automatically control all cameras and the split image function.

- Manual and automatic camera selection
- Stable power supply for camera and monitor
- Additional control keyboard

■ Technical data

Housing protection class	IP 30
Shock resistance	10 g
Vibration resistance	5 g
Camera inputs	4x Mini DIN
Storage temperature	-30 °C ... +80 °C
Operating temperature	-25 °C ... +75 °C
Power supply	12 / 24 V DC
Housing	Metal
Connections	Plug connectors
Image mirroring	Configurable using DIP switches
Trailer mode	On C2 input
Priority	C1 before C2; C2 before C3; C3 before C4
Video system	PAL & NTSC
Signal input	1Vpp (30% Sync neg)/75 Ω

■ Functions

- Power supply to TFT monitor and 4 compact cameras
- Video signal switching of 4 video inputs
- Image mirroring separately adjustable for each camera
- 1, to 4 camera images at once
- The control unit or control cables are used to switch the video inputs.

MVCU1500

for up to eight cameras



The Motec Video Control Unit (MVCU) offers many different options: Whether split, quad, or picture-in-picture (PIP) – the operator can select the display individually. Each camera can be controlled by freely programmable control cables or via CAN bus.

- Freely configurable image display
- Up to 6 fixed focal length cameras can be connected
- Up to 2 motor zoom cameras can be controlled
- Up to 2 monitors can be connected
- CAN Bus capable control system

■ Technical data

Housing protection class	IP 65		
Shock resistance	5 g		
Storage temperature	-40 °C ... +85 °C		
Operating temperature	-30 °C ... +65 °C		
Power supply	24 V DC		
Current consumption	max. 5 A		
Housing	Aluminium coated		
Video input/output signal	FBAS / 1 Vss / 75 Ω		
Video inputs	8		
Monitor outputs	2		
Activation	Control cable / CAN-Bus		
Plug connectors	Video inputs Video input Monitor outputs of control cables CAN-Bus Power supply	C1 – C6 Z1 – Z2 M1 – M2 SEL CAN P	KDB423/4p KS-M16/7p KD-M16/6p KS-M16/8p KSB423/4p KS-M16/3p

■ Functions

- Flexible configuration option
- CAN Bus for integration in the vehicle system bus
- Freely adjustable image display
- Control of all functionalities of connected motor-zoom camera

MBE5200-1

Control unit for motor-zoom camera



The MBE5200-1 control unit allows for the convenient operation of all functions of the MC5200-1 motor-zoom camera using a single device. The control unit also offers an extension option for the connection of an additional fixed focal length camera.

- Control of the MC5200-1 motor-zoom camera
- Controlling of an additional camera
- Power supply to camera and monitor

■ Technical data

Housing protection class	IP 54
Shock resistance	10 g
Storage temperature	-30 °C ... +80 °C
Operating temperature	-25 °C ... +75 °C
Power supply	24 V DC
Housing	Steel-galvanised, powder-coated
Power supply connection	Mini-Fit plug connector, 8 pole
Monitor connection	Sub-D plug connector, 9 pole
Motor-zoom camera connection	MSB plug connector, 7 pole
Compact camera connection	Mini-Din plug connector, 4 pole
Video connection	BNC plug connector

■ Functions

Control unit for MC5200
2nd Camera input for compact camera
Zoom in / Zoom out
Setting of the auto-focus
Setting of brightness

MAB5000-1

Battery unit for a stable and reliable power supply



The MAB5000-1 battery unit ensures a sturdy and reliable power supply the radio transmitter and the connected camera. The battery unit switches off independently when not operating to ensure the longest possible battery performance.

- Reliable power supply to camera and radio transmitter
- Automatic power off
- Automatic trigger function to switch battery on
- Quick-change mount for an uncomplicated battery replacement

■ Technical data

Housing protection class	IP X5, IP 65
Power supply	18V...32V DC
Current consumption	0,6 A
Storage temperature	-10 °C ... +30 °C
Operating temperature / charging	-15 °C ... +50 °C
Operating temperature / discharging	-15 °C ... +60 °C
Normal runtime with VS5100, MC5100 / VS5200, MC5200	>6h @ +15 °C (typ. 8h)
Housing	Sheet steel, polyester power-coated Quick-change mount



Transmission

Video transmission

Radio or cable – the ideal transmission route for every application

MVR6000

Wireless system in IP30 design



The MVR6000 makes it possible for several vehicles to receive the same camera signal. The advantages include fast harvesting and effective coordination of several auxiliary machines. Three channels are available. The wireless system operates in the range of 2.4 Gigahertz and has a range of up to 500 metres.

- Wireless transmitter and receiver
- Range: approx. 500 Metres
- 3 channels for trouble-free transmission
- Frequency range 2.4 – 2.4835 HGz
- ISM Band

■ Technical data

Housing protection class	IP 30
Shock resistance	5g
Operating temperature	-10 °C...+65 °C
Storage temperature	-20 °C...+75 °C
Camera supply	12 V / 250 mA, stabilised
Video system	PAL
Frequency range	2.4 GHz...2.4835 GHz ISM-Band
Channels	3
Signal input	1Vpp(30% Sync neg)/75 Ω
Power supply	12V DC
Current consumption	400 mA

MVR6065

Wireless system in IP65 design



The MVR6065 wireless system enables trouble-free image transmission at a distance of up to 500 metres. The broadcasters and receivers are best protected by the IP65 Housing protection class against weather influences such as rain. The wireless MVR6065 system is compatible with the wireless MVR6000 system allowing them to be combined.

- Range: approx. 500 Metres
- 3 channels for trouble-free image transmission
- Frequency range 2.4 – 2.4835 HGz
- ISM Band
- Waterproof
- Housing protection class IP65

■ Technical data

Housing protection class	IP 65
Shock resistance	Pulse 50 g / 11ms
Operating temperature	-20 °C...+65 °C
Storage temperature	-30 °C...+75 °C
Housing	Aluminium-anodised
Video system	PAL / NTSC
Frequency range	2.4 GHz...2.4835 GHz ISM-Band
Channels	3
Signal input	1Vpp(30% Sync neg)/75 Ω
Power supply	10-28 VDC (TX), 12VDC (RX)
Current consumption	300 mA
Vibration strength	Acceleration ± 49m/s ² , ± 0.35mm

MVR5200

with split function



The MVR5200-1 video data wireless system enables trouble-free transmission of the camera image of an MC5200-1 motor-zoom camera. Along with the transmission of the image to the video receiver, the signals required for the camera control are transmitted to the camera by integrated radio data transmission.

- Trouble-free image transmission
- Range: approx. 300 Metres
- Up to 5 video channels
- ISM band
- Integrated radio data transmission to the camera control

■ Technical data

Housing protection class	IP 65
Shock resistance	30g
Operating temperature	-35 °C...+60 °C
Storage temperature	-40 °C...+85 °C
Supply voltage	18V...32V DC
Housing	Aluminium anodised, plastic
Video transmission frequency	5.775...5.830 GHz
Range (max.)	300 m visual contact
Data transmission frequency	868...868.60 MHz
Current consumption	Max. 0.45 A with the addition of the connected devices

MKW

Camera cable



- High-grade and robust system cable
- Available in various lengths and designs
- Waterproof connectors
- With protective hose against mechanical damages
- Meets the highest industrial requirements in accordance with the industrial standard

MKWW

Extension cable



- Compatible with the MKW Series cable
- Camera connection using MiniDIN-W connectors
- High-grade and robust system cable
- Available in various lengths and designs
- Waterproof connectors
- Meets the highest industrial requirements in accordance with the industrial standard

MK24

Camera cable



- Robust cable for the toughest usage conditions
- Waterproof metal connectors
- Available in various lengths
- Optionally equipped with a protective hose

MK5

Extension cable



- Versatile connection cable
- Robust and waterproof metal connectors
- Available in various lengths and designs

MK17

Spiral cable



- Ideally suited for usage in forklifts
- Robust and resistant
- Optimal image transmission
- Flexible cable connection

MK11

Spiral cable



- Ideal connection cable
(e.g. between tractor and trailer)
- Robust connectors
- Designed for frequent detachment when coupling

MK279

Connection cable



- Ideal for usage in cranes
- Secure connection between motor-zoom camera and control unit
- High-grade coarse cable for heavy mechanical demand

MK73

Monitor cable



- Connection cable for series MD3070A monitors
- Power supply to the monitor via video control unit

MK35

Extension cable



- High-grade cable with plastic connectors (on both sides)
- Ideal for usage in winter road maintenance and construction areas
- Meets the highest industrial requirements
- Designed for frequent detachment of the connectors

MK304

Monitor cable



- Monitor connection cable
- Connection to video control units

MK78

Monitor cable



- BNC connector (monitor)
- Connection to video control units

MK67

Connection cable



- Coaxial cable
- Connection to video control units
- BNC connector

MK84

Cable with trailer socket



- Connection cable with robust FDJ/13pol for coupling
- For frequent coupling
- With integrated protective cover

MK85

Trailer cable



- Robust and durable plug connector
- Designed for frequent coupling
- High-quality coarse cable for excellent image quality

MK232

Trailer cable



- Trailer cable with robust and durable plug connector
- With protective hose
- Available in various lengths and designs

MK80.20-G.20

Camera cable



- MiniDIN-W connector (Monitor)
- With integrated MA2 socket
- Separation point with Binder693 connector

MK228

Mast cable for forklift trucks



- Robust mast cable for guiding through deflection rollers
- Compatible with Motec MPS deflection rollers
- Available in various lengths
- Extremely robust coarse cable for heavy mechanical loads

FLT.S10

Cable reel



- For the transmission of video signals
- Extremely robust and reliable technology
- Suitable for refrigerated warehouse
- Effective length: 10 Metres

MK25-MA2

Connection cable



- Stable connection cable
- Suitable for winter road maintenance
- Coupling point for trailer change

MK45

Charging cable 12/ 24V CD



- Power supply for Motec radio transmitters
- Design with robust Binder423 connector

MK75

Connection cable



- Waterproof Binder423 plug connection (camera)
- BNC plug connector (monitor)

MK257

Connection cable



- SUBMIN-D connector
- Binder423 connector

MK296

Trailer cable



- Trailer / drawbar cable
- Robust plug (13-pole)
- For frequent coupling
- Easily operable wearing work gloves

M476

Connection cable



- BNC connector (monitor)
- Connection option to MB1406 video control unit

MK475

Power cable



- Power supply to MB1406 video control unit
- Integrated control lines

MK464

Camera cable



- MiniDIN-W (camera) connector
- Camera connection to MB1406 video control unit

MK334

Connection cable



- Y cable for MB1406
- Connection of two cameras on one video input
Control unit input

MK332

Monitor connection cable



- Robust connector in accordance with the industry standard
- Connection of the MB1406 video control unit to the MD3100 monitor

MK66

Mast cable for forklift trucks



- Resistant mast cable for guiding through deflection rollers
- High-grade and robust coarse cable for heavy mechanical loads
- Fast and easy assembly using the provided connectors

MK379

Camera cable



- Connection cable for series MC9050 and MC9150 cameras
- Binder423 connector
- Angled connector (90°)

MK364

Camera cable



- Connection cable for series MC9050 cameras
- Straight connector

MK404

Monitor cable



- Connection cable for MD3100
- For the connection of Motec video control units

MK445

Mast cable for forklift trucks



- Stable and high-grade mast cable
- For guiding through deflection rollers
- Designed for heavy mechanical loads

MK587

Twin mast cable



- Transmit 2 camera images through a single mast cable
- For guiding through deflection rollers
- Special cable for heavy mechanical loads

MK588

Spiral cable for forklifts



- Extremely robust spiral cable
- Quick and easy assembly
- Waterproof connector

MK496

Connection cable



- High-grade and extremely robust connection cable
- Waterproof connector IP67
- Meets the highest requirements in accordance with the industrial standard



Video storage

Integrated solutions for storing video data

DVR410

Digital video recorder for up to four cameras



- Digital recording suitable for mobile applications
- Supports up to four cameras
- Supports up to two monitors
- Automatic activation by switching signals
- Search function in playback mode
- Optionally supplied with WiFi interface
- Optionally with GPS connection
- Recording on removable hard disks suitable for mobile applications

■ Technical data

Video input	4 inputs 1 Vs-s Composite PAL, BNC, autom. 75 Ohm ending
Video output	2x composite main monitor output, 1 Vs-s at 75 Ohm, BNC (rear side), RCA (device front)
Recording resolution	704 x 576 / 704 x 288 / 352 x 288, individually adjustable for each camera
Recording speed	1 ~ 100 image/s (352 x 288 and 704 x 288) 1 ~ 50 image/s (704 x 576) individually adjustable for each channel for normal and event recording (Residual speed is distributed among the remaining channels)
Recording modes	Continuous recording or event-oriented recording (contact)
Pre-alarm recording	up to 5 seconds
Fixed-disk storage	1 x 6,35 cm (2,5") SATA removable hard disk
Alarm input	4 alarm inputs N.O./N.C.
Alarm output	2 relay outputs 30 V DC/AC / 1A
Operating voltage	10 ~ 36 V DC (without 230 V AC power pack!) integrated overvoltage protection, programmable on/off switching delay.
Shock resistance	8G, 11 ms (max. 20 in a 5-second interval)
Dimensions (WxHxD)	178 x 50 x 199 mm (without installation kit for mobile usage / antenna) 272 x 145 x 224 mm (with installation kit for mobile usage / antenna)

DVR200

Digital video recorder for up to two cameras



- Digital recording suitable for mobile applications
- Supports up to two cameras
- Automatic activation by switching signals
- Recording on mobile SD memory card
- Search function in playback mode

■ Technical data

Video input	2 inputs 1 Vs-s Composite PAL, BNC, autom. 75 Ohm connection
Video output	1 composite main monitor output, 1 Vs-s at 75 Ohm, BNC (rear side)
Recording resolution	720 x 576 / 720 x 288 / 360 x 288, individually adjustable for every camera
Recording speed	1 ~ 50 images (all resolutions) individually adjustable for each channel for normal and event recording. (Residual speed is distributed among the remaining channels)
Recording modes	Continuous recording or event-oriented recording (contact)
Fixed-disk storage	Max. 32GB, SD card interface for optional SD card 3.3V, supports SDHC Host Specification
Alarm input	2 alarm inputs N.O./N.C.
Alarm output	1 alarm output
Operating voltage	8 ~ 32 V DC (Overvoltage protection, delay on/off)
Ambient temperature (operation)	-10 °C ~ +55 °C



Accessories

Accessories

The Motec accessory range offers useful supplements for every application

Quick-release bracket

MC3000-SWH-2



- Robust quick-release bracket
- Easy to install
- For series MC3000A compact cameras
- Suitable for usage on communal vehicles

Cleaning system

RS1000



- For the MC3000 and MC6000 series
- Cleaning at the press of a button
- High-pressure pump (24V)
- Separate tank (13 Litre)
- Easily integrated in existing systems

Light protection hood

MC3000-LSH



- For the MC3000A camera series
- Sharp images even in sunshine
- Effective anti glare

Wind deflector

MC3000A-WLB



- For the MC3000A camera series
- Effectively prevents soiling of the camera lens
- Usage on truck attachments

Anti-vibration support

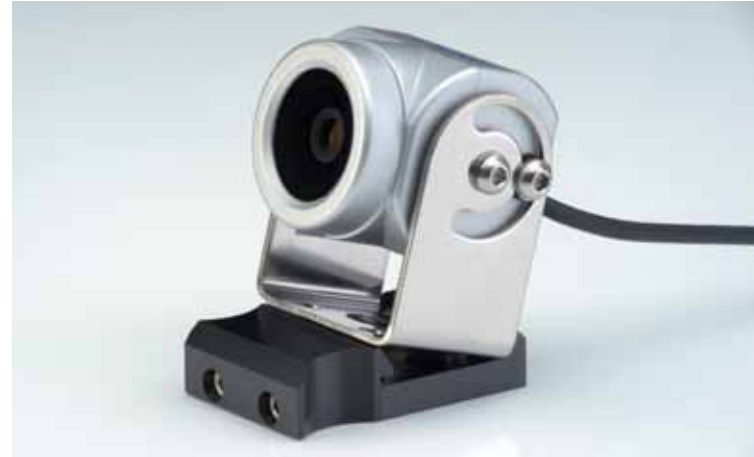
For the MC3000A camera series



- Reliable vibration absorption
- Easily mounted on the camera support bracket
- Quick retrofitting possible

Quick-release bracket

MC6000-SWH



- Higher flexibility
- Shorter conversion times
- The mounting position on the vehicle can be quickly changed

Multi-adapter

MC6000-MA



- Easy attachment, quick replacement
- For the MC6000 camera series
- UV-resistant plastic
- Installed with a few easy steps

Light protection hood

MC6000-LSH



- For the MC6000 camera series
- Sharp images even in sunshine
- Effective glare protection

Antistonechip glass

MC6000-SG



- For the MC6000 camera series
- Easy mounting
- Effective protection of the lens

Cleaning system

RS6000



- For series MC6000 cameras
- Cleaning at the press of a button
- High-pressure pump (24V)
- Separate tank (13 Litre)
- Easy integration in existing systems

Bracket kit

MC9000-H1



- Stainless steel mount for MC9150 camera
- For mounting on fork shanks
- Protects the camera from contact with pallets and stored goods

Suspended bracket

MP5000



- For the MC5200-1 crane camera series
- The camera always remains balanced
- Cushioning - even in wind and movement of the boom the camera stays in position

Light protection hood MD-LSH



- Protects against heavy sunlight
- Available for almost every TFT-Monitor
- Ergonomic design

Swivel Support / extension MD-KG



- Robust swivel support
- Corresponding ball joint extension
- TFT monitor can be securely mounted in almost every position in the driver's cab

Assembly / cushioning kit MD-V



- Effectively absorbs vibrations and shocks
- Prevents the transmission of vibrations to the monitor

Splayfoot MD-SF



- Screw / adhesive mounting for monitors
- Quick and easy installation

Monitor bracket

RAM-MH1



- Stable bracket
- Flexible adjustable
- Easy conversion of existing devices
- Can be used for 7" and 10" monitors

Monitor bracket

RAM-MH3



- Stable bracket
- Flexible adjustable
- Suitable for 5" and 7" monitors

Suction base



- Easy mounting of the monitor on the cabin wind shield
- Dismantling within seconds
- Allows for easy usage on multiple vehicles

Voltage transformer MPM48



- Suitable for cold stores
- Easy "backpack" assembly on the monitor rear
- Input voltage 48V
- Designed for MD3074A monitors

Connection box

MA3



- Serves as an adapter for connecting two camera cables
- Provides an additional separation point

DC voltage transformer

SW103.48 / 80



- DC voltage transformer DVC75-48-24
- For a trouble-free power supply to the camera system
- Available for 48V and 80V DC input voltage

Video signal amplifier

MTP-VS and MTP-VE



- Video signal amplifier for broadcaster and receiver
- Signal converter (analogue-digital) for twisted-pair cables
- Suitable for mobile applications
- Automatic adaptation of the signal in accordance with the transmission length

Power pack

NG230.24



- 24V DC power supply for Motec camera systems
- For 230V AC voltage input

Tension relief set for Mast cables

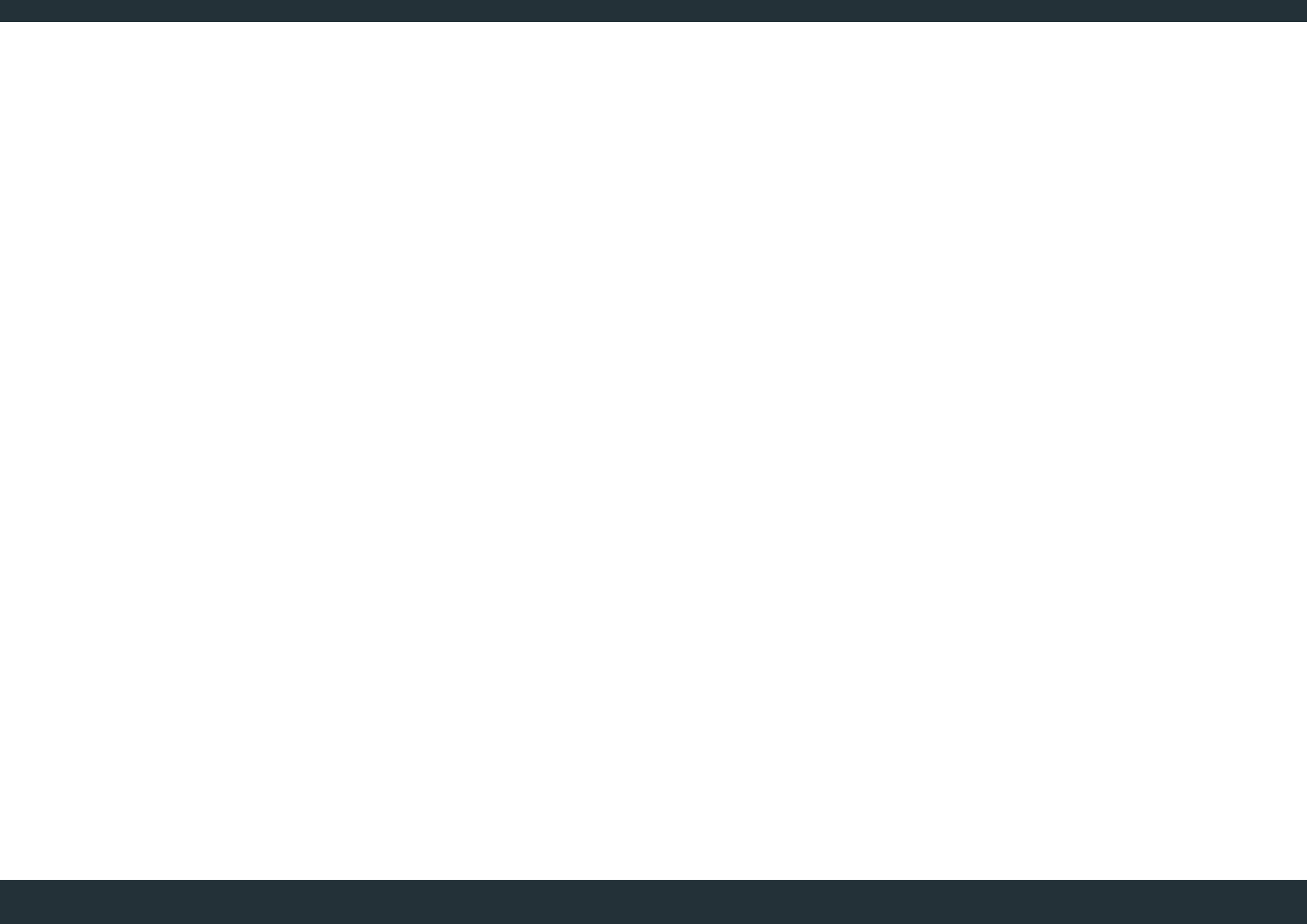


- Prevents damage to the mast cable connectors
- Extends the service life of the mast cable

MPS deflection roller for Mast cables



- High-grade deflection roller for Motec mast cable
- Reduces wear on the mast cable
- Targeted guidance of the mast cable during the lifting process





Motec GmbH
Oberweyerer Straße 21
65589 Hadamar-Steinbach
GERMANY

Phone +49 (0) 6433 9145 0
Fax +49 (0) 6433 9145 45
E-Mail info@motec-cameras.com
Web www.motec-cameras.com

Your local motec dealer

